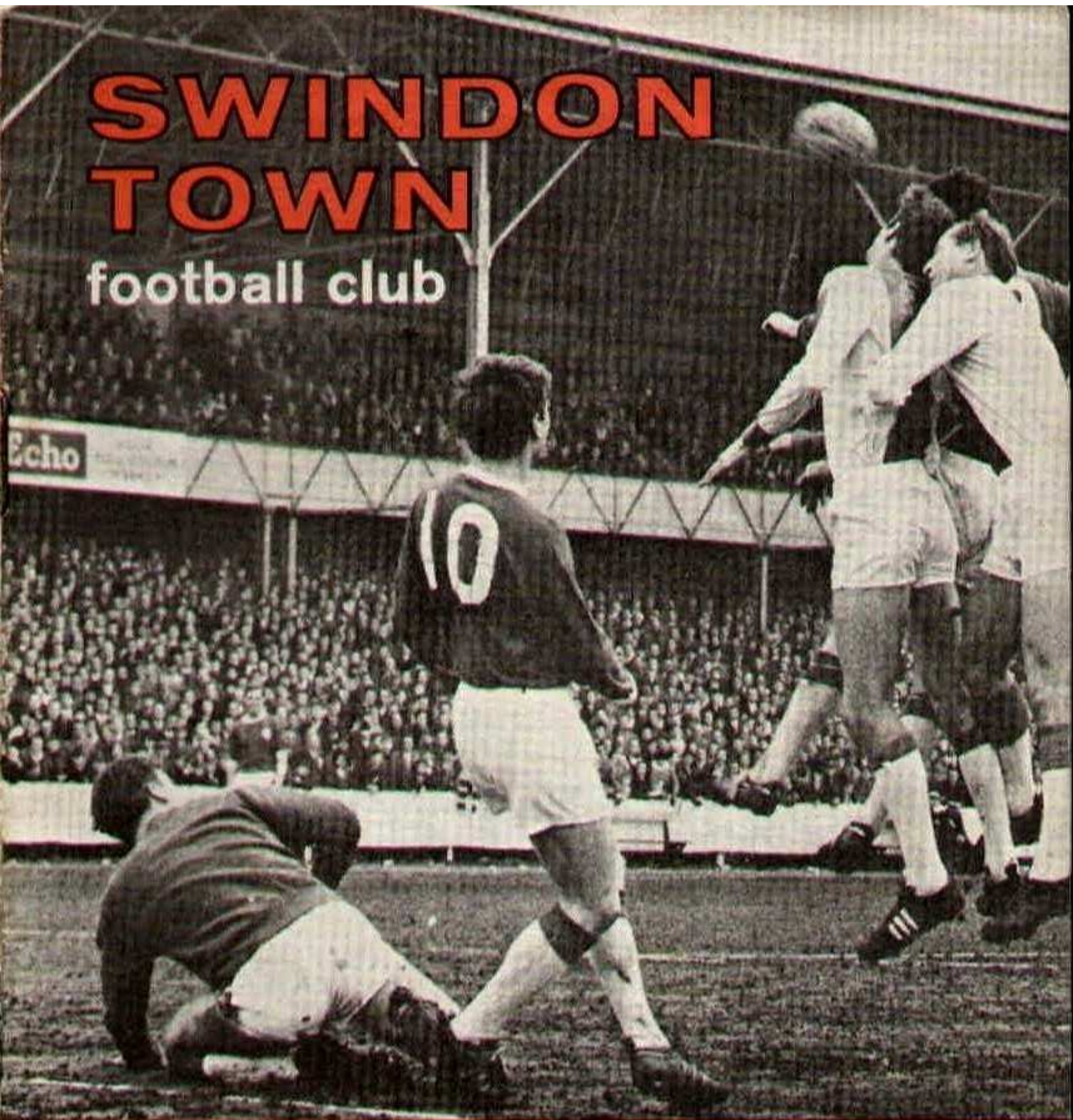


# SWINDON TOWN

football club



official programme 6d



For over 70 years we have been one of Swindon's leading house furnishers, offering a personal service. You cannot do better than to inspect our showrooms before making your final decision.

Contractors to

County and Borough Councils

Hospitals

Government Departments

Factories

Schools

We are open until 5.30 p.m. each evening and 1 p.m. on Wednesdays.

Telephone 5365/6

**Mills & Merricks**  
LTD.

**16-17 BRIDGE STREET, SWINDON**



# **SWINDON TOWN FOOTBALL COMPANY LIMITED**

Registered Office: COUNTY GROUND, SWINDON

## **Directors:**

Mr. W. J. CASTLE (Chairman)

Mr. H. E. LANE (Vice-Chairman)

Messrs. F. L. COLLINGS, A. W. DONE, M. EARLE, R. FRICKER, C. J. GREEN,  
F. PLYER, H. WILLIAMS and K. H. WILMER.

Manager: D. WILLIAMS.

Secretary: R. A. MORSE.

---

**VOL. 17**

**SATURDAY, JANUARY 21st, 1967**

**No. 17**

---

**SATURDAY, JANUARY 21st, 1967**

**DIVISION III**

**SWINDON TOWN**

**v.**

**BRISTOL ROVERS**

**Kick-off 3 p.m.**

---

## **REFEREE:**

Mr. D. J. LYDEN (Small Heath)

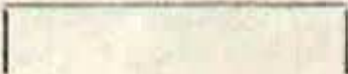
## **LINESMEN:**

**Red Flag**—Mr. W. S. CASTLE (Sedgley)

**Yellow Flag**—Mr. G. D. HELLIER (Roath)



**For ALL forms of PRINTING—get in touch with the  
BOROUGH PRESS SWINDON**

  
**STATIONERY**

**MULTIPLE SETS**

**BUSINESS CARDS**

**LOOSELEAF LEDGERS**

**STATEMENTS**

**INVOICES**

**COLOUR WORK TICKETS POSTERS LEAFLETS BUSINESS FORMS**

$\frac{b}{p}$

**NOTEPAPER LETTERHEADS CATALOGUES BROCHURES BOOKS**


**SHOWCARDS**

**TECHNICAL LEAFLETS**

**DIE STAMPING**

**LABELS**

**MAGAZINES**

**WEDDING STATIONERY**  


**Quality printing — delivered on time**

**Borough Press Swindon Limited, Eastcott Hill, Swindon**

---

**Suppliers to the Swindon Town Football Club**

***Swindon Sports Centre***

**SUPPORTERS SCARVES - RATTLES - Etc.**

**23 COMMERCIAL ROAD**

**Tel. 4270**



# NEWS and VIEWS

Our away form seems to have deserted us. After the great wins at Bournemouth and Peterborough, we seemed to be able to take every game in our stride. Darlington had on a new lease of life when we met them. They apparently produced their best form for over a year.

On Saturday we caught Watford on the crest of the wave, urged on by a record crowd.

Watford are very much in the running for promotion and, judging by their performance, they must be considered strong candidates. Last Saturday they chose to dispose of 17,000 ground tickets for the cup-tie with Liverpool. This produced a very large crowd, many of them watching Watford for the first time this season. Nevertheless, they were right behind the home team from the kick-off. This game, and the result was of much greater importance to the home team than the cup-tie, which produced such interest.

Such is the attraction of cup-tie football, yet for a team to gain promotion to Division II is by far a greater achievement than winning a cup game. After last Saturday's display, we can only hope those supporters present will continue to support Watford.

The game itself was most attractive from a spectator's point of view. Both teams played fast, open football. No defensive tactics, with a line of defenders. Whilst Swindon did not produce such cut and thrust as our opponents we carved out several openings which at other times might have produced goals, and we certainly defended valiantly. It was not our day.



**Come Co-operative Shopping**



FOR  
THE BEST  
IN  
MEN'S  
WEAR

**SWINDON AND DISTRICT CO-OPERATIVE SOCIETY  
6 FLEET STREET, SWINDON**



This afternoon we again meet a team challenging for promotion, who also have a very important home cup-tie, namely Arsenal.

No doubt Bristol Rovers will make the same comment as Watford: It is far more important for them to win this afternoon than their cup-tie. It is equally important for us to win this afternoon. We are still dangerously near the bottom four places in the league table. We must get away from that position, as the end of the season draws nearer.

Supporters will remember with pleasure the two outstanding games we had with Bristol Rovers, both played in mid-week, last season. The first, played on Tuesday, 7th September at Bristol resulted in a win for Swindon 1—0, with a great goal scored by Rogers near the end. The return game was played at Swindon on Tuesday, 5th October. Result: Swindon 4, Bristol Rovers 3. A fine match, with the Rovers taking a two goal lead in the first twenty minutes.

Teams — Swindon: Downsborough; Butler, Trollope; Morgan, Nurse, Atherton; Weaver, Smart, Lawton, Brown, Rogers. Bristol Rovers: Hall; Hillard, Jones (G); Petts, Stone, Mabbutt; Jarman, Brown, Biggs, Jones (R), Munro.

Last year we spoke appraisingly of the Rovers' policy, namely to develop good team-work at all levels, to promote good football, and **not** to win at any price. How true they put those ideals into practice in both matches — no gamesmanship, few fouls, no wasting of time, no kicking away of the ball, etc.

We trust that magnificent policy continues, and all present will witness a fine display of bright, open, skilful football.



Tel. Swindon 5884

**W. J. SELWOOD**

*Saddlery*

General Leather Goods Manufactured  
and Repaired to Your Individual  
Requirements

148a MANCHESTER ROAD  
SWINDON, WILTS.

Always at your service

**L. BIBBY**

For all Types—Rags, Iron and Metal,  
etc. Spot Cash Paid. Please Tel. 2101  
and our van will call.

THE PADDOCK, ERMIN STREET  
STRATTON ST. MARGARET

★ **Cedarwood Sheds**

★ **Workshops and Greenhouses**

Made locally by

**H. R. SPACKMAN**

**SHRIVENHAM ROAD - SWINDON - WILTS.**

Telephone Swindon 4458

**WISES CATERING  
SERVICE**

(Reg. Wise)

Our Caterer for the past 18 seasons  
Guarantees

A GOOD CUP OF TEA AT THE  
COUNTY GROUND

A full range of Sweets & Cigarettes  
at any of our five kiosks on your  
way in. **ENJOY YOURSELF**

**Warnes Rentals—**

*To be sure !*

51 Commercial Road,  
**SWINDON**

**Tel: 6486**



## NEWS AND VIEWS—continued

A suggestion has been made regarding the formation of a new league for the Reserve teams of clubs in the south-west of England, namely such teams as Bristol, Southampton, Plymouth, Swansea, etc.

This must present a difficult problem to Swindon. While we like to join with and help our neighbours, we cannot at the present time leave the Football Combination.

This season we are enjoying unprecedented success in Division I of the Combination. Most attractive games, drawing large gates, are being staged on the County Ground. Last Saturday, for instance, against the Arsenal — who fielded a strong team containing no less than seven men with first-team experience, and some for whom substantial fees were paid — a gate of almost three thousand enjoyed a great match.

The opposition in Division I not only attracts large crowds, but provides wonderful match play for our young lads. It is certainly teaching them a great deal.

Also what a wonderful thrill it must be for our Reserve team, some of whom are still under eighteen years of age, to play at such grounds as White Hart Lane, Arsenal Stadium, Stamford Bridge, Filbert Street, etc.

Playing in this class of football must surely improve the standard of our team. Obviously the better class of football produces the best players. In many ways, this season, our Reserve games have provided better entertainment than the senior matches.



# WILSONS (SWINDON) LTD.

BUILDERS OF MODERN ATTRACTIVE  
HOUSES AND BUNGALOWS

Enquiries to:

HEAD OFFICE: 90 COMMERCIAL ROAD, SWINDON 6361

SITE OFFICE: COVENTRY FARM ESTATE, WROUGHTON 271

SITE OFFICE: COLEVIEW ESTATE, STRATTON S.M. 314

## Maylott Studios

For GROUP & SPORT Photographs

Official Photographer to  
Swindon Town Football Club

31 FARINGDON ROAD  
TEL. 22792

## Notton's Cafe

COUNTY ROAD

200 yards from Ground

RIGHT ON THE BALL

## L. Wollen

OFF LICENCE

WINES and SPIRITS

Arkell's Ales and Stout

373 Cricklade Rd., Swindon

Deliveries Dally

Phone 3508

## C. DUNN & SON

Builders & Decorators

Alterations, Renovations,  
Conversions, Plumbers &  
Sanitary Engineers

503 CRICKLADE RD. Tel. 22522

## W. COLLINS (Swindon) LTD.

TURF ACCOUNTANTS

69 COMMERCIAL ROAD - SWINDON

TEL. 21371

AND AT THE GREEN, LYNEHAM



# DIVISION III

(up to, and including, Wednesday, 18th January, 1967)

	P	W	D	L	F	A	Pts.
Queen's Park Rangers.....	25	16	7	2	70	25	39
Bristol Rovers .....	28	14	7	7	53	43	35
Mansfield Town .....	26	14	5	7	54	44	33
Watford .....	25	13	6	6	35	21	32
Oldham Athletic .....	26	12	5	9	54	36	29
Gillingham .....	26	9	10	7	33	33	28
Torquay United .....	27	11	5	11	43	34	27
Middlesbrough .....	25	11	5	9	49	31	27
Walsall .....	24	12	3	9	37	39	27
Reading .....	26	11	4	11	41	36	26
Shrewsbury Town .....	26	10	6	10	43	41	26
Peterborough United .....	25	8	9	8	43	41	25
Grimsby Town .....	25	11	3	11	40	40	25
Colchester United .....	25	10	5	10	46	47	25
Brighton & H.A. ....	25	9	6	10	32	33	24
Bournemouth & B.A. ....	25	8	8	9	23	33	24
Scunthorpe United .....	26	9	5	12	31	46	23
<b>Swindon Town .....</b>	<b>24</b>	<b>8</b>	<b>6</b>	<b>10</b>	<b>44</b>	<b>36</b>	<b>22</b>
Doncaster Rovers .....	25	9	4	12	38	64	22
Darlington .....	27	9	3	15	26	53	21
Oxford United .....	25	6	8	11	29	33	20
Leyton Orient .....	24	4	10	10	28	41	18
Swansea Town .....	26	4	9	13	47	62	17
Workington .....	24	5	5	14	30	47	15





# W. J. CASTLE

Office and Bakery:  
4 and 5 MARKET STREET  
SWINDON

Telephone 22017

## Specialists—

BIRTHDAY CAKES - WEDDING CAKES  
DAIRY CREAM - PASTRIES  
BUNS - ROLLS - SPONGES

Do not let **CHILBLAINS** spoil a good game



## RELAPERNE

Price 2/6 from your CHEMIST

2/10 Post Paid from

**BALLARD & CO. (CHEMISTS) LTD.**

**FARINGDON - BERKS**



# OUR VISITORS



## **ALFIE BIGGS**

Although he spent a year with Preston North End in 1961-62 Alfie Biggs is Rovers' longest serving current player, having joined the Club from school in 1952. A Bristol-born six-footer, he created a Club record in 1963-64 by scoring 37 League and Cup goals. A keen golfer and cricketer; Alfie and his wife Marion have one child.

## **JOHN BROWN**

Has been a regular inside forward for most of his three seasons at Eastville. Formerly with Plymouth Argyle, John is Cornwall-born, and a grafter. Aged 26, John and his wife Fay live in a Club house, and his hobbies include art-work and painting, with golf as his second sport. Height 5ft. 8in.

## **JOE DAVIS**

Captain of the Club, a Bristolian, joined Rovers from a local amateur side in 1955. Can perform creditably at full-back and in any half-back position. Married with one child, Joe does a great deal of painting and decorating in his spare time. Height 5ft. 9in.

## **ROGER FRUDE**

Although only 19 has been at Eastville over four years, having completed his soccer apprenticeship. Possessed a great natural ability, Roger has a deal of representative experience behind him, including English Youth International appearances. Height 6ft.

## **IAN HAMILTON**

Bristolian. Joined Rovers in 1956, became a full-time professional early in 1962 on completion of an aircraft apprenticeship. Another player recruited from local amateur football after leaving school. His father and late brother were also Rovers' professional players. Height 5ft. 8½in. Inside forward.

## **KEN RONALDSON**

Edinburgh born, 21-year-old inside-forward, signed from Aberdeen in July 1965. Tall and well-built, Ken made several Scottish League appearances at Aberdeen. Held his first team place with Rovers at latter end of season. Height 5ft. 11in.



**G. H. FLOWER & SON LIMITED**

WOOD LANE, CHIPPENHAM

LICENCE No. S.2802

PHONE 2017

## **SCRAP METAL**

and

**GENERAL WASTE SALVAGE DEALERS**

Plant dismantling carried out

Members of  
**National Association of Non-Ferrous Metal Merchants**

## **THE PORK SHOP**

(Swindon Bacon Curing Co. Ltd.)

Specialists in

**BACON - PORK - COOKED HAM**

**50 FLEET STREET - SWINDON**

**TEL. 22122**

Meet your friends for an enjoyable evening at

## **THE KINGSDOWN ARMS**

(Host A. W. Vann)

**FULLY LICENSED - ARKELL'S BEERS**

**SNACKS - Etc.**

**STRATTON ST. MARGARET**

**Tel. 3283**



## **OUR VISITORS—continued**

### **RICHARD PLUMB**

Swindon born centre-forward, aged 20. Tall and wiry, Dick was signed from Swindon in 1965, where he had shown good potential in Youth and Reserve team football.

### **HAROLD JARMAN**

Joined Rovers in 1959 from a local amateur club. Regular right-winger for past five seasons and scorer of many fine goals. A Bristolian, Harold and his wife Penny have two young children. His main interest is sport, and has played cricket for Gloucestershire in recent years. Qualified F.A. Coach (Preliminary). Height 5ft. 8in.

### **RAY MABBUTT**

A hard working wing-half who began as a forward. Came to Rovers in 1955 and has been a regular for seven seasons. Has used his spare time well in preparing for his future after football, and gained a number of qualifications through the League Vocational Training Scheme. Qualified F.A. Coach (Preliminary). Born in Aylesbury, Bucks, is a father of three, and his hobby is sailing. Height 5ft. 6in.

### **ALEX MUNRO**

22-year-old Scott, joined Rovers October 1962 from a Glasgow amateur club. A wing-half of much promise, he has also given good service at outside-left. Married last season, his hobbies are gardening, reading and woodwork. Height 5ft. 9½in.

### **DOUG HILLARD**

For the second time in three years is holder of Rovers' "Clubman of the Year" Award. A Bristolian, recruited from a local amateur Club in 1957, has been regular right-back since 1959. Doug and his wife Janet have two youngsters and their home is at Wick near Bristol. Hobbies, fishing and gardening. Holds F.A. (Preliminary) Coaching Badge. Height 5ft. 8½in.



# BRETTS

PET AND GARDEN SUPPLIES

32-33 Commercial Rd.  
Swindon

6 Cromwell St.  
Swindon

## HOLMES & LUCAS

For a complete range of the very latest in radio,  
television and all domestic appliances

Home demonstrations.

Top Part Exchanges

HOLMES & LUCAS, 14 Regent Street

Tel. 22526 & 4721

FOR ALL YOUR ANGLING NEEDS  
CONSULT

### FRANK WOODWARD

Swindon's Fishing Tackle Specialist

25 HAVELOCK ST., SWINDON

PHONE 3879

For Paints of Good Quality

### H. S. HODGES & SONS

(SWINDON) LTD.

CRICKLADE RD., SWINDON

PHONE 22422

Dulux, Brolac, Valspar, Wallcharm,  
etc.

### SOUTHERN LAUNDRY CO. LTD.

Launderers and Dry Cleaners

HAYDON ST. - SWINDON

TELEPHONE 4161

### COMLEY'S

Modern Music Centre

26 HAVELOCK ST., SWINDON

RECORDS - MUSIC - INSTRUMENTS

Top Twenty 'Pops' always in stock  
and wide selection of Jazz & Classics

Personal Supervision Phone 3874



## **OUR VISITORS—continued**

### **DAVID STONE**

Twenty-two-year-old Bristolian, joined Rovers straight from school in 1958-59, and became a professional at seventeen. Can play at centre-half, right-half or full-back. Married, with one baby, David's hobbies include music, records, and cricket in the summer. Height 5ft. 10½in.

### **LARRY TAYLOR**

Nineteen-year-old Exeter-born goalkeeper; joined the Club as an apprentice player soon after leaving school. Has played regularly in the Football Combination side since he was fifteen and became a full time professional in December 1965. Height 5ft. 11in.

### **JOHN WILLIAMS**

Although Bristol born, went to Plymouth at an early age and became a Plymouth Argyle player Season 1955-56, and was transferred to Eastville in December last. Made over 500 appearances for Argyle and has brought authority to Rovers defence.

---

**STAND TICKETS FOR THE  
3rd ROUND F.A. CUP TIE  
*WEST HAM UNITED*  
v.  
*SWINDON TOWN***

**to be played on  
SATURDAY, 28th JANUARY, 1967  
will be on sale to holders of Season Tickets only  
AFTER today's match.**

**THIS IS NOT AN ALL TICKET MATCH**



## Hatton's Newsagency

A. J. D. & N. J. Woodhouse

Newsagents :: Tobacconists  
Confectioners

Agents for Wessex School of  
Motoring

Booking Agents for Rimes Coaches

6 Regent Circus (near G.P.O.)

Telephone Swindon 22731

## HULFORD MOTORS Ltd.

### SELF DRIVE HIRE

Fleet of 1966 Fords  
Anglias De-Luxe - Cortinas  
De-Luxe - Zephyr 4s.

### SHRIVENHAM ROAD

(200 yards from Football Ground)

Phone 4934

Large Car Park available

For High Class  
Central Heating, Plumbing  
Painting and Decorating  
Electrical Installations  
and Repairs

## NORTH WILTS Sanitary & Heating Co. Ltd.

NEWPORT ST., SWINDON

Phone 5373/4

## FLOODLIGHTING?

## Warnes Installations

BATHURST CORNER, COUNTY RD., S

Electrical Contractors to the

WE INSTALLED THIS FLOODLI

SWINDON TOWN

Hicks

Thomas (2)

Troll

Smart (4)

Nurse (5)

Rogers (7)

Brown (8)

Penman (9)

B

Swindon Colours:

RED SHIRTS, WHITE SHORTS

KEEP IN TOUCH

EVENING

ADVERTISER

WITH THE NEWS

Swindon's 12th Man  
SKEEN

Munro (11)

Frude (10)

Biggs (9)

Mabbutt (6)

Stone (5)

Davis (3)

Hilla

Taylor

BRISTOL ROVERS

## Mills & Merrick

Complete House Furnis

Furnishing Contrac

16-17 BRIDGE STREET, SWINDON.



?

# **Installations Limited**

**COUNTY RD., SWINDON. Tel. 27291**

Contractors to the "Town"

**THIS FLOODLIGHT SYSTEM**

**SWINDON TOWN**

**Hicks**

2)

**Trollope (3)**

**Nurse (5)**

**Harland (6)**

**Penman (9)**

**Butler (10)**

**Walker (11)**

These teams are subject  
to alteration

**KEEP IN TOUCH**

**EVENING**

**ADVERTISER**

**WITH THE NEWS**

**Bristol's 12th Man  
PETTS**

**Biggs (9)**

**Brown (8)**

**Jarman (7)**

**Stone (5)**

**Williams (4)**

3)

**Hillard (2)**

**Taylor**

**BRISTOL ROVERS**

# **c Merricks Ltd.**

**e House Furnishers and**

**ishing Contractors**

**T, SWINDON.**

**Tel: 5365/6**

## **McILROYS**

**— RESTAURANT —**

**Banqueting & Ballroom**

for morning coffee,  
luncheon and  
afternoon tea - in  
pleasant surroundings -  
you will find McIlroys  
are top of the  
'league'. For all  
occasions.

Fully Licensed. Parties and  
Functions catered for.

## **McIlroys Restaurant**

**64-72 Regent Street**

**Tel. 5294**



**THE ALCOHOL FUEL**

## **COATE GARAGE**

**REPAIRS - OVERHAULS - WELDING  
SERVICING - REBORING - TYRES**

Props. E. V. & W. H. Mattick  
Marlborough Rd., Swindon



---

# SUPPORTERS *CLUB NOTES*

---

Today, as well as being a local Derby, is marked by another occasion in the history of the Supporters' Club. This morning the Supporters' Club football team, which plays in the Swindon Sunday League, played the Bristol Rovers Supporters' Club team at Penhill. As these notes are being written well before Saturday, and not being gifted with second sight, I cannot tell you the result. However, we will arrange for the result to be broadcast at half-time. The availability of pitches in Swindon is always a problem, but no doubt our energetic Football Secretary will be keen to arrange such matches with other Supporters' Clubs. The Bristol Rovers Supporters' team are being dined at the Social Club after the match, and we are looking forward to meeting both the team and other Rovers' supporters at the Social Club, both before and after the match. At the end of these Notes will be found full particulars of this evening's entertainment, together with future attractions.

As I am writing, I hear that Bernard Hall, the Rovers' goalkeeper, who has been unconscious in hospital since the Middlesbrough game, has regained consciousness, and we sincerely hope that from now on he will make a rapid recovery. Supporters may recall that Bernard Hall was the goalkeeper last season when a benefit match was staged for Nat Prosser, one of our own young players who, through injury, had to give up professional football. I hope that one of the Rovers' supporters will take a programme back for him, as I am sure all Swindon supporters will join me in wishing him an early, complete recovery and return to rejoin his team.

The Social Club darts team goes from strength to strength. Johnny Legge, who is the team captain, wishes all Social Club members to note that a Darts Competition for members is being arranged. This will be an individual knock-out com-





## throughout the West

you will find Bradley Estates beautifully situated to meet the requirements of modern living. If you are thinking about a new home and would like to receive full details of our current and planned estates write now to 74 Victoria Road Swindon Wiltshire. Please send me details of

- ☐ Green Meadow Estate, Swindon, Wiltshire
- ☐ Nythe Estate, Swindon, Wiltshire
- ☐ Monkton Park Estate, Chippenham, Wiltshire
- ☐ Park Hill Estate, Frome, Somerset
- ☐ Milldown Estate, Blandford Forum, Dorset
- ☐ Southwick Estate, Trowbridge, Wiltshire
- ☐ Estate planned for Poole, Dorset

Name .....

Address .....



# BRADLEYESTATES



## SUPPORTERS' CLUB NOTES—continued

petition, and that a most magnificent Cup will be obtained for the winner. Entry for the competition will be 1/- (no doubt the number of entries will have some bearing on the magnificence of the Cup), so any member wishing to enter should watch these notes, and the Club notice board, for further information. Since joining the Darts League, the darts team results have been: Stratton British Legion (away), won 4—1; Co-op Club (away), won 3—2; E.T.S.C. Club (home), won 5—0.

Members might like to note the following home darts match this month: The Asterisks, 23rd January.

Other Social Club entertainments for the next few weeks are:

EVERY FRIDAY—BINGO. Eyes down 8.30 p.m.

EVERY SATURDAY IS PARTY NIGHT. Music tonight by the

SATURDAY, 28th JAN.—Music by the SWINDON MUSIC CENTRE.

SATURDAY, 4th FEB.—Music by the STARDUST TRIO.

SATURDAY, 11th FEB.—Music by the BRIAN HAYLEY TRIO.

SATURDAY, 18th FEB.—Music by the ENRICO TRIO.

EVERY SUNDAY—BINGO at 8 p.m. Dancing and sing-song from 9 p.m.

The main social event of the football season is the Supporters' Club Annual Dinner and Dance. The size and facilities of the Social Club do not permit this to be held in the Social Club and, as in past years, it will be held at McIlroys Restaurant. This year the date will be **Wednesday, 1st March**. Book the date now and wine, dine and dance in pleasant surroundings. As in the past, we hope to see many of the Football Club Directors, players and staff, who are free on that evening, join us in the annual get-together.



Suppliers to the Swindon Team

**MAY WE SUPPLY YOU?**



**EARLE**

**of Chippenham Limited**

MAIN



DEALERS

**COCKLEBURY ROAD - CHIPPENHAM**

**Telephone 3255**



# KEY OF THE BOARD

## First Section

- A—Blackpool v. Arsenal
- B—Chelsea v. Aston Villa
- C—Leeds United v. Fulham
- D—Leicester City v. Sunderland
- E—Liverpool v. Southampton
- F—Manchester City v. Manchester United
- G—Newcastle United v. Nottingham Forest
- H—Sheffield United v. Stoke City
- I—Tottenham Hotspur v. Burnley
- J—West Bromwich Albion v. Everton
- K—West Ham United v. Sheffield Wednesday
- L—Birmingham City v. Preston North End
- M—Blackburn Rovers v. Wolverhampton Wanderers
- N—Bolton Wanderers v. Cardiff City
- O—Bristol City v. Coventry City
- P—Carlisle United v. Ipswich Town
- Q—Charlton Athletic v. Huddersfield Town
- R—Derby County v. Crystal Palace
- S—Hull City v. Millwall
- T—Norwich City v. Bury

## Second Section

- A—Portsmouth v. Rotherham United
- B—Bournemouth & B.A. v. Gillingham
- C—Colchester United v. Oxford United
- D—Doncaster Rovers v. Queen's Park Rangers
- E—Grimsby Town v. Brighton & H.A.
- F—Mansfield Town v. Darlington
- G—Middlesbrough v. Scunthorpe United
- H—Peterborough United v. Leyton Orient
- I—Reading v. Watford
- J—Shrewsbury Town v. Oldham Athletic
- K—Walsall v. Torquay United
- L—Barnsley v. Aldershot
- M—Bradford v. Crewe Alexandra
- N—Halifax Town v. Tranmere Rovers
- O—Hartlepool United v. Bradford City
- P—Newport County v. Wrexham



... not just concrete, but

# **Premix**

SWINDON AREA OFFICE c/o COLN GRAVEL CO. LTD.  
CLAYDON PIKE LECHLADE GLOS.

PHONE LECHLADE 461/2

Premix—an Amey company—serves 21 counties



## **CLARK BROS. (Swindon) Ltd.**

Building and Civil Engineering Contractors

CONSULT US FOR  
BUILDING AND CIVIL ENGINEERING  
CONSTRUCTION IN ALL ITS PHASES

**STRATTON ROAD**  
**SWINDON**

Telephone  
Swindon 27261



# SWINDON TOWN F.C. SPORTSMEN'S ASSOCIATION

## Week No. 2 (2nd Series). Mauve tickets. January 9th-14th

Monday .....	£20	21324	£5	18140
Tuesday .....	£20	21450	£5	24938
Wednesday .....	£20	14267	£5	26888
Thursday .....	£20	21831	£5	12166
Friday .....	£20	18947	£5	10628
Saturday		£100	18871	

## 1st Series Car Winner

J. W. Morrison, 109 Drove Road, with Week 3 Tan Ticket  
No. 13393

Mr. Morrison won a brand new Anglia De Luxe in this free draw. Why not tell all your friends and workmates and order some tickets from the Competitions Office?

## Week No. 3 (2nd Series). Green tickets. January 16th-21st

Monday .....	£20	24136	£5	14070
Tuesday .....	£20	12912	£5	24182
Wednesday .....	£20	11016	£5	19066
Thursday .....	£20	13260	£5	25401
Friday .....	£20	21093	£5	18308
Saturday		£100	25364	

## Robins Flutter 1s. half-time tickets Jan. 10th (dated 7th)

£50	1st prize .....	01—12—05
£30	2nd prize .....	08—07—03
£20	3rd prize .....	08—03—04

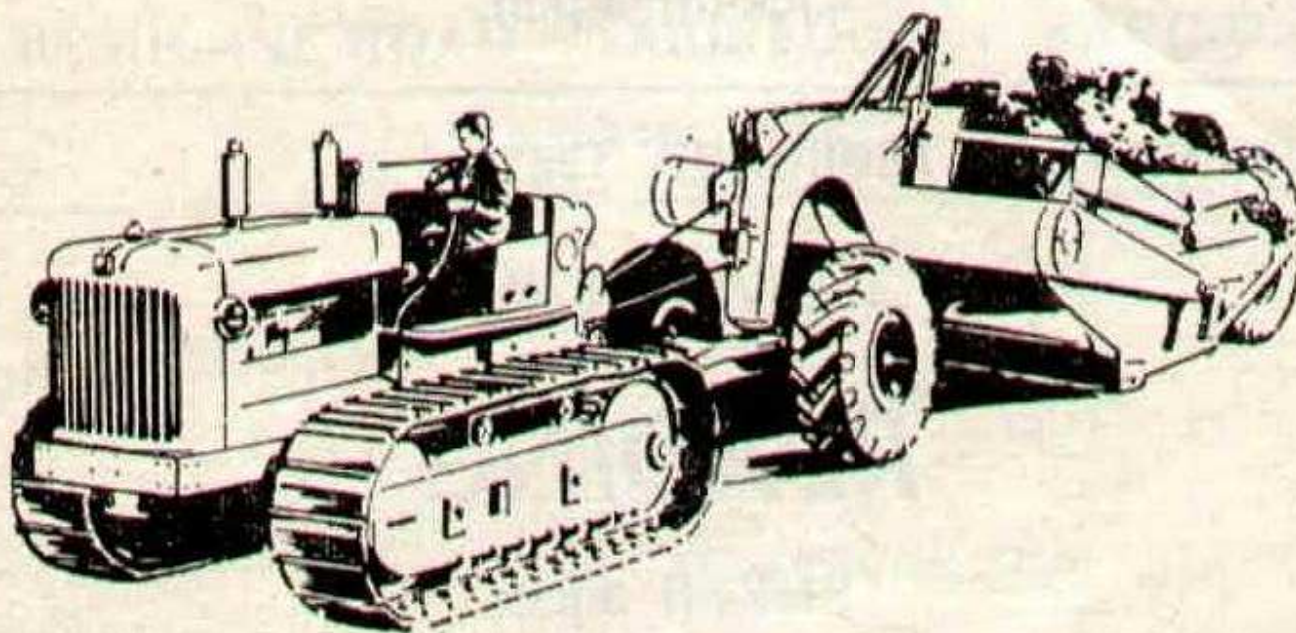
**Bonus prizes for all tickets marked "Bonus Winner"**



# **H. HIBBERD LTD.**

**40 NEWPORT STREET, SWINDON**

***Plant Hire Contractors***



**FOR YOUR EARTH-MOVING EQUIPMENT**

**TELEPHONE SWINDON 6125**



# **FORTHCOMING MATCHES**

**SATURDAY, 28th JANUARY, 1967**

**HOBBS CUP**

**SWINDON BOYS v.  
OXFORD BOYS**

**Kick-off 3 p.m.**

---

**SATURDAY, 4th FEBRUARY, 1967**

**DIVISION III**

**READING**

**Kick-off 3 p.m.**

---

**SATURDAY, 11th FEBRUARY, 1967**

**FOOTBALL COMBINATION**

**CHELSEA**

**Kick-off 3 p.m.**



## **Cecil Green**

Artistic Decorations in all its branches

12 Armstrong Street, Swindon, Wilts.

Tel. 4593

---

## **G. A. STREETLY**

**Tobacconist and Confectioner**

**10 BOURNE ROAD - MOREDON - SWINDON**

**Telephone: 4956**

"COAL!"  
"COAL!"  
"COAL!"

## **J. WILMER**

**St. Margaret's Road  
Swindon**

**TELEPHONE 22535**

---

## **LEESE, ING & CO. LTD.**

Mineral Water and Squash Manufacturers

**LANDSDOWN ROAD - SWINDON**

**TELEPHONE 22744**



# DIVISION III

Date	Opponents	Gate	Ground	Result
August 20	BRIGHTON & HOVE ALBION	10,102	(A)	2—2
24	BOURNEMOUTH & B.A. (League Cup)	7,769	(H)	2—1
27	DARLINGTON	10,855	(H)	4—0
September 3	QUEEN'S PARK RANGERS	7,900	(A)	1—3
6	COLCHESTER UNITED	11,600	(H)	1—1
10	WATFORD	9,999	(H)	1—2
13	PORTSMOUTH (League Cup)	7,784	(H)	4—1
17	BRISTOL ROVERS	10,907	(A)	0—3
24	READING	9,064	(A)	1—2
26	COLCHESTER UNITED	7,874	(A)	1—2
October 1	DONCASTER ROVERS	7,780	(H)	0—1
4	DONCASTER ROVERS (League Cup)	9,190	(A)	1—1
8	SHREWSBURY TOWN	7,985	(H)	2—2
11	DONCASTER R. (League Cup Replay)	8,147	(H)	4—2
15	MIDDLESBROUGH	8,126	(A)	0—4
18	WALSALL	9,027	(A)	1—1
22	SWANSEA TOWN	8,638	(H)	4—0
25	W. BROMWICH ALBION (League Cup)	16,254	(H)	0—2
29	BOURNEMOUTH & B.A.	6,333	(A)	4—1
November 5	LEYTON ORIENT	8,996	(H)	5—1
12	GILLINGHAM	7,320	(A)	0—1
19	WORKINGTON	9,497	(H)	3—0
26	(1) HORSHAM	8,000	(A)	3—0
December 3	OLDHAM ATHLETIC	10,347	(H)	6—3
10	OXFORD UNITED	10,037	(A)	0—0
17	BRIGHTON & HOVE ALBION	9,900	(H)	1—1
24	PETERBOROUGH UNITED		(A)	2—1
26	PETERBOROUGH UNITED	14,619	(H)	4—1
31	DARLINGTON	5,060	(A)	1—2
January 7	(2) ASHFORD TOWN	12,079	(H)	5—0
14	WATFORD		(A)	0—2
21	BRISTOL ROVERS		(H)	
28	(3)		( )	
February 4	READING		(H)	
11	DONCASTER ROVERS		(A)	
18	(4) GRIMSBY TOWN		(H)	
25	SHREWSBURY TOWN		(A)	
March 4	MIDDLESBROUGH		(H)	
11	(5) GRIMSBY TOWN		(A)	
14	QUEEN'S PARK RANGERS		(H)	
18	SWANSEA TOWN		(A)	
25	BOURNEMOUTH & B.A.		(H)	
27	TORQUAY UNITED		(A)	
28	TORQUAY UNITED		(H)	
April 1	LEYTON ORIENT		(A)	
8	(6) GILLINGHAM		(H)	
11	MANSFIELD TOWN		(H)	
15	WORKINGTON		(A)	
18	WALSALL		(H)	
22	SCUNTHORPE UNITED		(H)	
24	MANSFIELD TOWN		(A)	
29	(S.F.) OLDHAM ATHLETIC		(A)	
May 6	OXFORD UNITED		(H)	
12	SCUNTHORPE UNITED		(A)	





# British Rail

## We can organise your Group Travel—very well too!

**As a start . .** you need only ten people to qualify for the Special Group Travel discount (two children count as one adult).

**And to go on with . .** there are reduced fares for day outings, single and return; for parties making journeys over a period; and for individuals (minimum) travelling to one particular point for a business meeting or conference.

**Ask at your** local station or travel agent for full details.

ESTABLISHED 1923

# DOBELL SHEARMAN & CO. LTD.

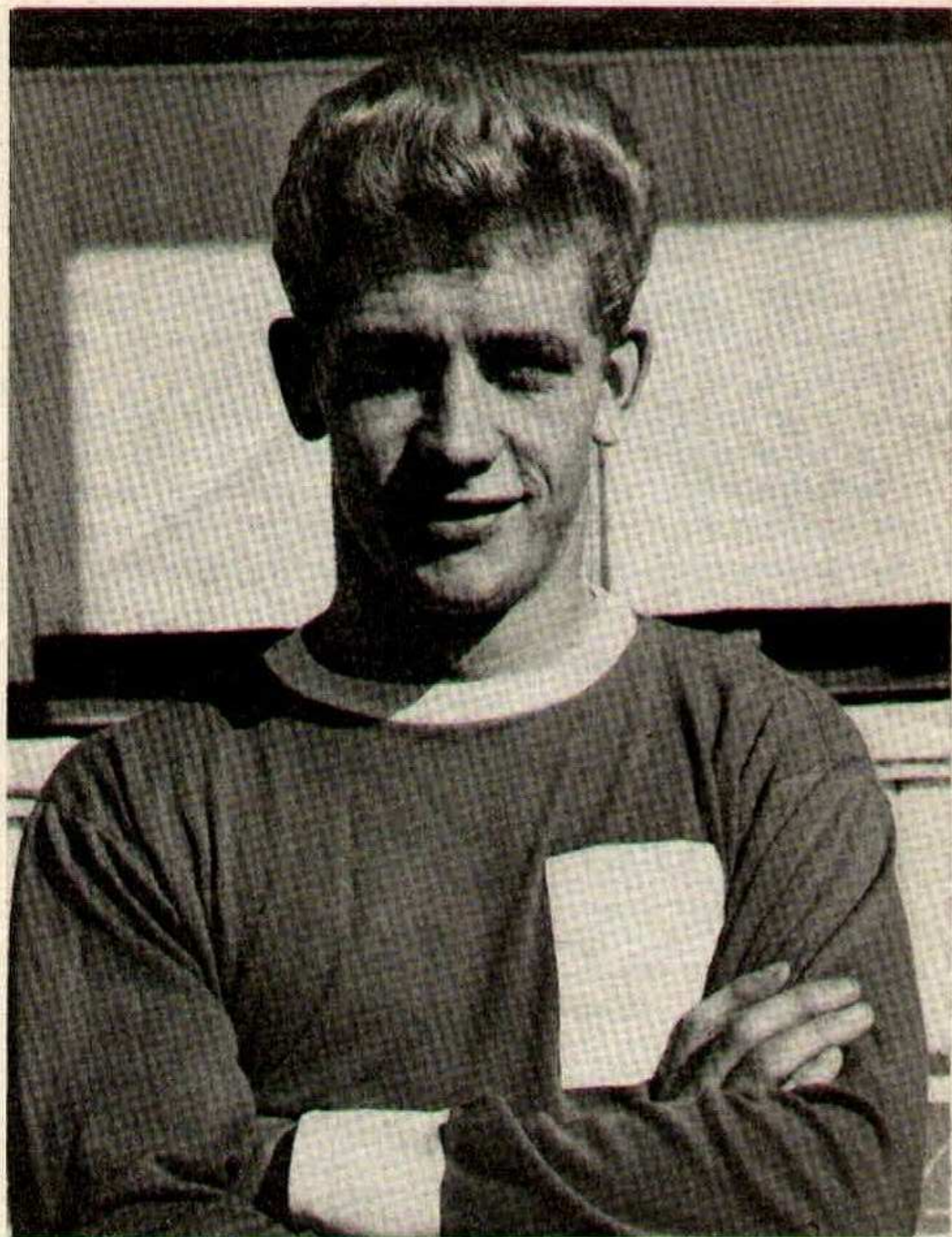
## £10 TYPEWRITERS from £10

Also full selection new standard and portable typewriters  
OFFICE EQUIPMENT

29 High Street & 33 Faringdon Road, Swindon. Tel. 4961/2

The Advertisers in this programme have supported the Club. Will you help us reciprocate by supporting them whenever possible?





**ERIC WEAVER**



F. J. ROPER  
Devizes Rd.  
Swindon  
Phone 22341

F. J. ROPER  
Cliftonian  
38 William St.  
Swindon  
Phone 3785

*Swindon's*  
*Finest*  
**FISH and CHIPS**

**CALL ON  
YOUR  
WAY  
HOME**

Menu

**PLAICE  
HAKE  
COD  
SKATE**

**WE SHALL BE  
WAITING  
TO  
SERVE YOU**

F. J. ROPER  
High St.  
W'tton Bassett

F. J. ROPER  
Cross Hayes  
Malmesbury





Accidents cost lives in the Homes, on the Roads and in the Factories of Swindon. Please, when you drive home **"TAKE CARE"** and remember, **"If you drive—don't drink"**.

## THE FOOTBALL COMBINATION

Table of results to Wednesday, 18th January, 1967 (not inclusive)

### DIVISION I

	P	W	D	L	F	A	Pts.
Tottenham Hotspur .....	13	11	1	1	39	13	23
Leicester City .....	16	9	3	4	39	27	21
<b>Swindon Town .....</b>	<b>14</b>	<b>9</b>	<b>2</b>	<b>3</b>	<b>24</b>	<b>17</b>	<b>20</b>
West Ham United .....	13	7	2	4	35	21	16
Arsenal .....	12	8	0	4	27	19	16
Peterborough United .....	12	7	2	3	26	25	16
Nottingham Forest .....	13	7	1	5	38	27	15
Southampton .....	18	6	3	9	37	35	15
Northampton Town .....	12	6	2	4	28	25	14
Crystal Palace .....	14	6	1	7	25	32	13
Chelsea .....	16	5	3	8	28	38	13
Plymouth Argyle .....	14	4	3	7	31	29	11
Gillingham .....	12	3	4	5	23	33	10
Coventry City .....	12	4	2	6	20	31	10
Ipswich Town .....	16	4	1	11	21	36	9
Fulham .....	13	3	1	9	23	31	7
Reading .....	14	2	1	11	18	43	5





MY MASTER SAYS THAT  
**MAN'S SECOND BEST FRIEND  
IS A SAVINGS BANK ACCOUNT**

Local Offices  
17 Commercial Road, Swindon.  
6 Maryport Street, Devizes.

**T** RUSTEE  
**S** AVINGS  
**B** ANK



8,000 SEATS FOR SHEFFIELD WEDNESDAY F.C.

6,000 SEATS FOR SHEFFIELD UNITED F.C.

7,000 SEATS FOR ASTON VILLA F.C.

4,000 SEATS FOR PETERBOROUGH AGRICULTURAL SOCIETY

3,000 SEATS FOR OLDHAM F.C.

10,000 SEATS FOR HULL CITY F.C.

**FAST, EFFICIENT SERVICE FROM MARTYN LYNSHAW LTD.**

- **LIGHT CONSTRUCTIONAL STEELWORK**
- **BALUSTRADING AND MOTORWAY FENCING**
- **ANCILLARY WORK FOR THE BUILDING TRADE**



**FAST EFFICIENT SERVICE BY  
MARTYN LYNSHAW LIMITED**

Telephone  
21844

**BOUNDARY WORKS - STRATTON ROAD - SWINDON**